

Response Form

1. The Club values the views of the village. If you think that the project could be designed to account for the needs of other potential users please specify them below.
.....
.....
2. Do you have any objections to the proposal to replace the pavilion, or reasons why you think it would not benefit the village to do so?
.....
.....
3. If you have comments on the potential design please list them below.
.....
.....
4. Any further comments.
.....
.....
5. Name and contact details
.....
.....
.....

Please return this form to

Sharon Fielding
1 Common Hill
Braishfield
HANTS SO51 0QF
or
any member of the Braishfield
Parish Council
or
the Braishfield Village Association

BRAISHFIELD FOOTBALL CLUB

Introduction

Braishfield Football Club is in the very early stages of replacing its existing club house. The Club now provides football facilities for a wide age range, including of course the thriving junior section which welcomes local children aged between 8 and 14.

The Club house is an expensive asset which sits idle for much for the time when it could be working for the wider benefit of Braishfield. We believe that the project presents an opportunity to design it in a way which would enable other local groups, particularly the school, to use it more fully.

We have a good idea of the sort of facility we hope to provide, and of the way in which the project might become a beacon of village involvement. However, the early input of the community as to **exactly** how this might happen is integral to the process.

The Club intends to apply for a landfill tax grant, which will fund about half of the cost of the project. The success of the grant application depends to a large degree on the project having the support of the community it will serve, and your response to this questionnaire is therefore important. It will enable us to demonstrate that the project enjoys the support of and will also contribute materially to the vitality of the village. Please take a moment to complete and return the form on the rear of this leaflet.

Ras Fielding and Terry Whitelock

Many of you will be aware of the premature deaths last year of Alan (Ras) Fielding, who was a club stalwart throughout a life spent entirely in Braishfield, and of Terry Whitelock, who also had a 40 year association with the Club as a player and manager.

The Club intends that the pavilion replacement project will become a lasting memorial to them both. Particularly, it was Ras' wish, and that of his family, that his death should provide strong impetus to the pavilion replacement project.

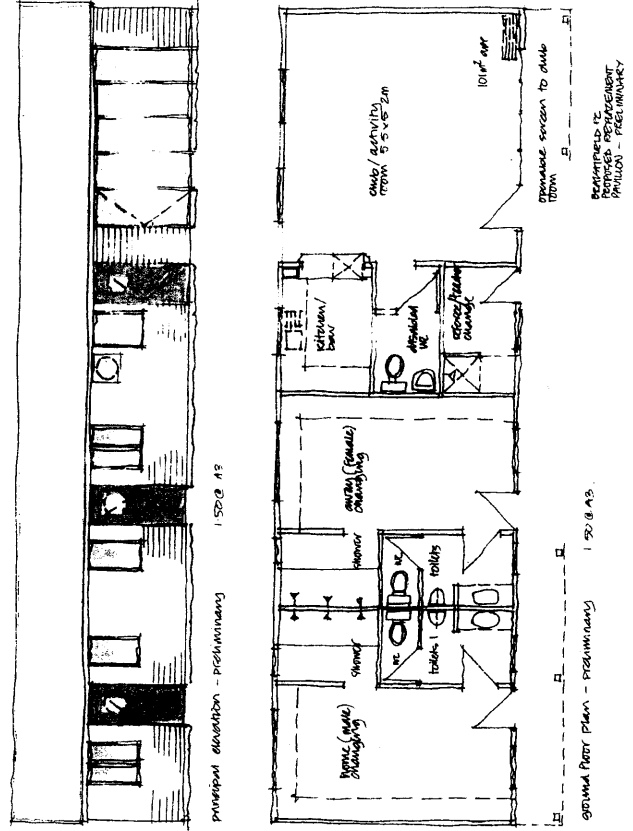
The fund established in his memory has already reached a significant sum, but, as ever with projects of this sort, and particularly in these difficult economic times, there is an overall funding gap which can only be filled by the efforts of the Club and the village. A number of fund raising events are planned and your support of these is requested.

It goes without saying that if anyone wishes to contribute directly to Ras' memorial fund, the entire sum of which will go directly to the project, it would be greatly appreciated. Please send your donations to Sharon Fielding, whose details are at the foot of the response form on page 4.

The project will provide a new building, on the site of the existing, to provide new changing rooms and a club room which will potentially be suitable for use by a variety of organisations.

The social facility is small, but would enable various groups, particularly school classes, to meet in a convivial, comfortable and well-serviced environment. The changing rooms have been designed to provide separate same-sex changing and toilet facilities, and the club room accommodates disabled toilet facilities. It will complement but not compete with the more formal amenities of the Village Hall. Its core facilities, particularly the club/activity room and toilets can be opened to support activity on the playing field, such as the fete, school sports day etc...

The project is being designed and managed entirely by club members in order to keep pre-construction costs to a minimum and thereby, ensuring that maximum resource is devoted to the building itself.



PREPARED BY
REVISED DRAWING
PHILLIPS - PRELIMINARY